



“EQUIPPED TO MEET YOUR NEEDS”

Track a)))Cow by ENGS Systems In-heat & Cow Movement Telemetry System

**Too busy to observe your heifers? Do you milk with a robot?
Are your cows grazing?**

It does not matter how you manage your cows, Ag-Co Products Limited LTD. has the solution for any size of herd and any farm type with the only long-range radio leg tag in the world. **Track a))) Cow** features the smallest pedometer in the market for detection of in-heat and cow movement.



Main Characteristics

- Uses the long range pedometer technology and provides an advanced high-resolution in-heat detection with continuous indicators for animal posture—lying or standing.
- The typical installation is simple, consisting of single unit receiver covering a range of up to 500m.
- No physical bottlenecks are caused by the reader or gates.
- The track a cow system easily integrates with existing milking equipment and provides additional features for cow identification, both in-post and during walk through.
- Simple and fast strap attachment on either front or back leg.



The Advantages of High Resolution

- Cow information is updated every few minutes— Real time telemetry.
- Not influenced by irregular milking sessions (robot milking).
- Improved data accuracy.
- Quicker in-heat detection during the 2nd phase of the heat cycle.
- Less in-heat events missed compared to slower systems.
- Automatic “ready for insemination” notification can be sent to printer, e-mail, or SMS.

Phone: 519-393-5179
Fax: 519-393-5195
E-mail: sales@ag-co.on.ca
Web Site: www.ag-co.on.ca
#4842 Perth Line 34 (Hwy #8 west)
Sebringville, Ontario N0K 1X0

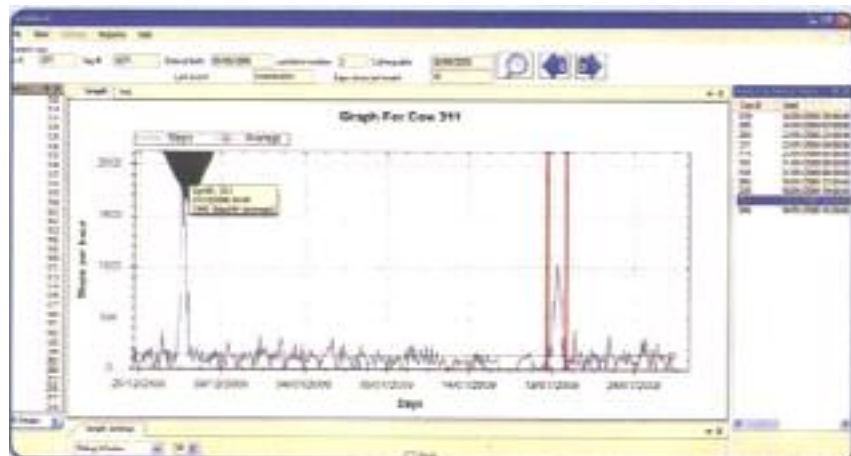
Track a))Cow EcoHerd Software

Reports

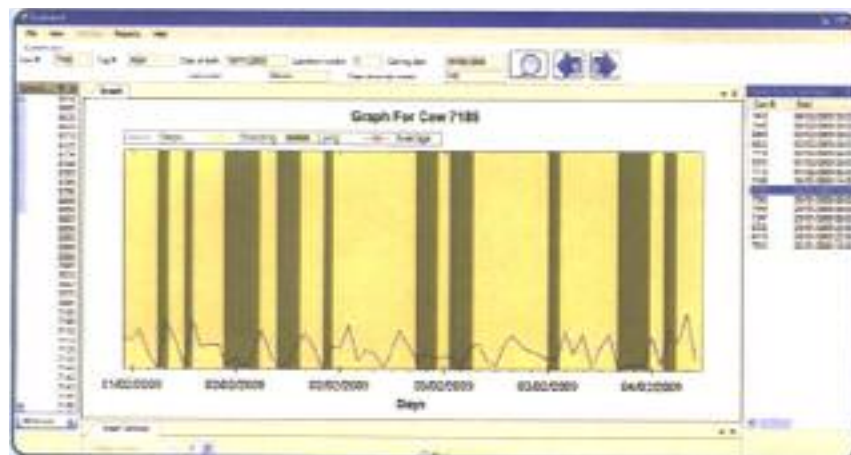
- Ready for service - Cows in-heat that are ready for insemination.
- Suspected for in-heat - Cows with high activity that are suspected to be in-heat.
- Cows in-heat - Cows with in heat or insemination event.
- Inactive tags - Indication for malfunctioning tags, or tags that fell off the animal.
- New tags - Immediately assisting you to monitor cows with new tags during the first 7 days, before they will be shown on the reports.
- Export the reports to Excel or other applications.

Graphs

- Activity in a convenient sliding window. Resolution scale:1,2,4,6,8,12,24 hours. Up to 60 days history.
- Posture (lying/standing) graph in combination with activity.
- Multiple lactations.



High resolution graph



Lying/standing and Activity graph

Ecoherd can be interfaced (export/import) with most existing herd management systems.